



How To Install Windows OS on WD Solid State Hybrid Drive

1. REQUIREMENTS

- (1) WdHybrid_v1 6.zip – A tool package to disable SSD
- (2) WD Boost Driver – Please download from MSI website as the link below
 - GP60 <http://www.msi.com/product/nb/GP60.html#download>
 - GP70 <http://www.msi.com/product/nb/GP70.html#download>

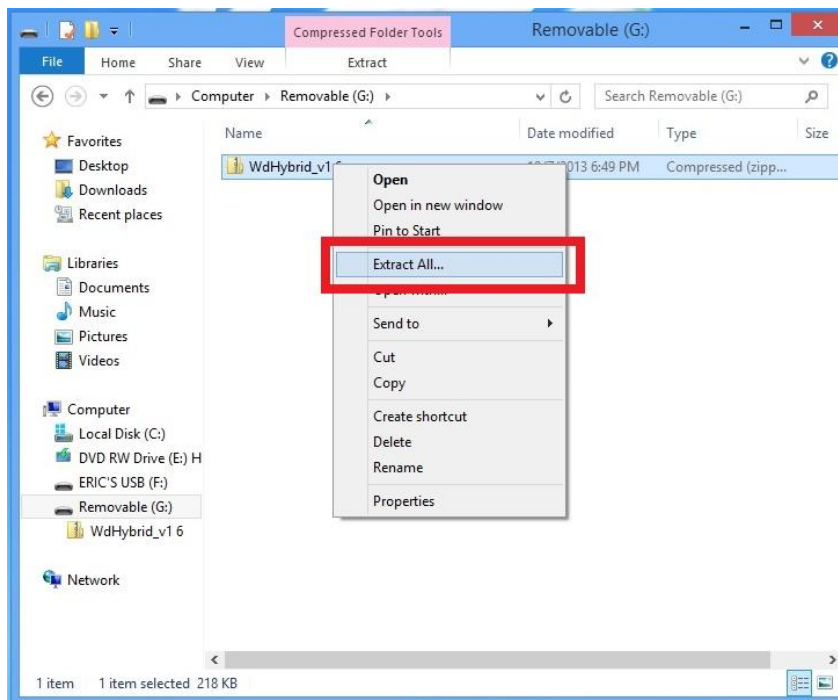


- (3) USB Thumb Drive
- (4) Windows OS Installation Disc

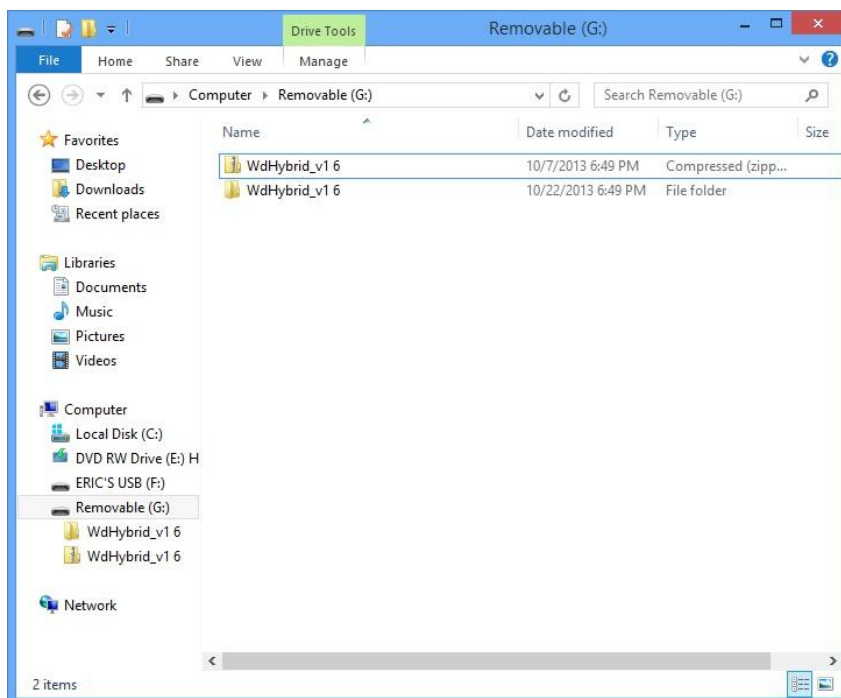
2. PROCEDURES OF CLEAN INSTALL ON FreeDOS

Part 1, Prepare Applications

1. Extract “WdHybrid_v1 6.zip” in an external USB thumb drive.
Click “Extract All...” to extract this folder



2. After that, you will see the folder of “WdHybird_v1 6” on the USB thumb drive



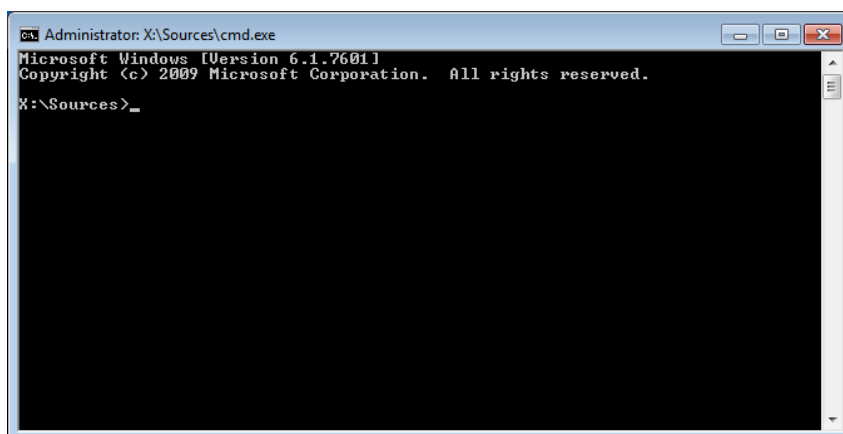
Part 2, Disable SSD in Win PE mode

Insert the Windows OS Installation Disc into the optical drive and USB thumb driver into your laptop USB port.

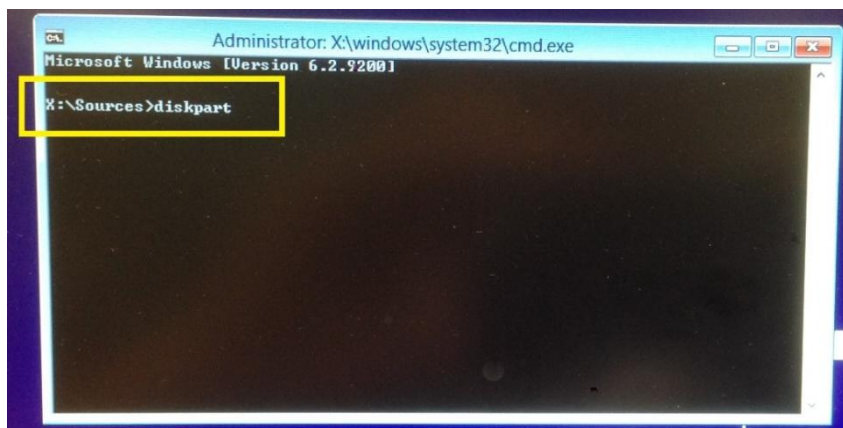
3. Boot up from the Windows OS Installation Disc and you will see the following Windows Setup Screen.



4. Press "SHIFT+F10" to start "Windows Command Line" as the window below



5. Type "diskpart" in Windows command line, then press "Enter"



6. Type “list vol” and then press “Enter”

```

Administrator: X:\windows\system32\cmd.exe - diskpart
Microsoft Windows [Version 6.2.9200]

X:\Sources>diskpart
Microsoft DiskPart version 6.2.9200
Copyright (C) 1999-2012 Microsoft Corporation.
On computer: MINWINPC

DISKPART> list vol
  
```

7. The USB thumb drive will be shown as “D: Removable” (it depends on the setting of your laptop)

```

Administrator: X:\windows\system32\cmd.exe - diskpart
Microsoft Windows [Version 6.2.9200]

X:\Sources>diskpart
Microsoft DiskPart version 6.2.9200
Copyright (C) 1999-2012 Microsoft Corporation.
On computer: MINWINPC

DISKPART> list vol

Volume ### Ltr Label Fs Type Size Status Info
-----
Volume 0 E HRM_CPRA_X6 UDF DVD-ROM 3326 MB Healthy
Volume 1 C NTFS Partition 953 GB Healthy
Volume 2 Recovery NTFS Partition 300 MB Healthy Hidden
Volume 3 FAT32 Partition 100 MB Healthy Hidden
Volume 4 D Removable NTFS Removable 14 GB Healthy
Volume 5 F Removable 0 B No Media

DISKPART>
  
```

8. Type “exit” in Windows command line, then press “Enter”

```

Administrator: X:\windows\system32\cmd.exe - diskpart
Microsoft Windows [Version 6.2.9200]

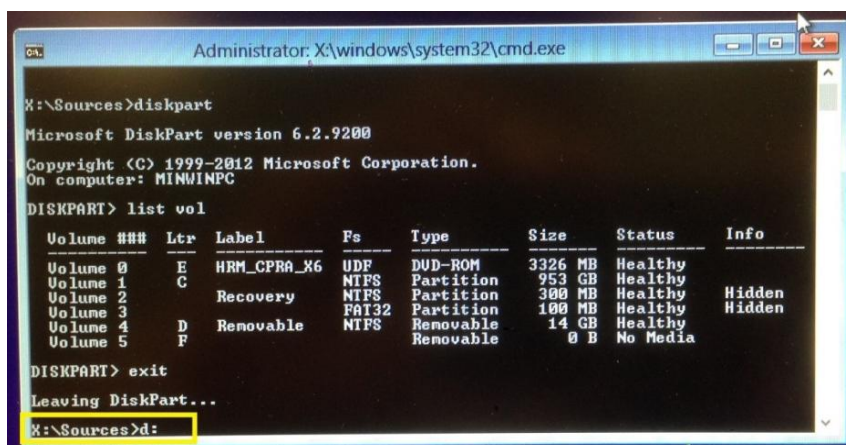
X:\Sources>diskpart
Microsoft DiskPart version 6.2.9200
Copyright (C) 1999-2012 Microsoft Corporation.
On computer: MINWINPC

DISKPART> list vol

Volume ### Ltr Label Fs Type Size Status Info
-----
Volume 0 E HRM_CPRA_X6 UDF DVD-ROM 3326 MB Healthy
Volume 1 C NTFS Partition 953 GB Healthy
Volume 2 Recovery NTFS Partition 300 MB Healthy Hidden
Volume 3 FAT32 Partition 100 MB Healthy Hidden
Volume 4 D Removable NTFS Removable 14 GB Healthy
Volume 5 F Removable 0 B No Media

DISKPART> exit
  
```


9. You need to access your USB thumb drive to run WdHybrid to disable SSD.
Type “d:” in Windows command line then press “Enter”.



```

Administrator: X:\windows\system32\cmd.exe

X:\Sources>diskpart
Microsoft DiskPart version 6.2.9200
Copyright (C) 1999-2012 Microsoft Corporation.
On computer: MINWINPC

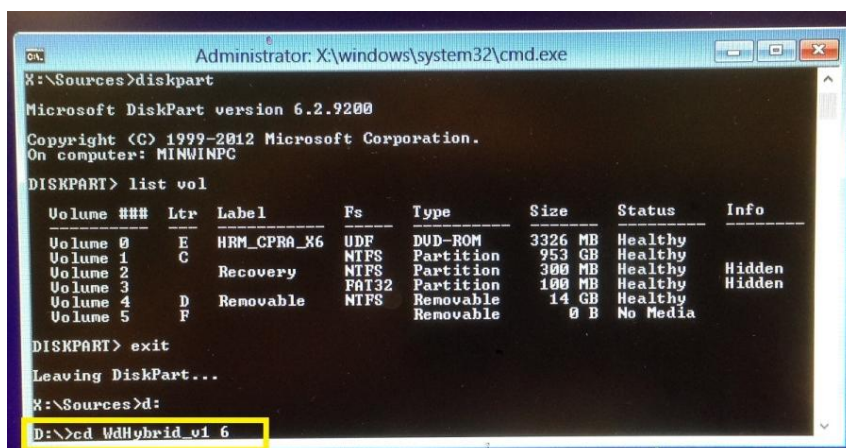
DISKPART> list vol

Volume ### Ltr Label          Fs      Type          Size      Status       Info
-----
Volume 0    E  HRM_CPRA_X6  UDF     DVD-ROM       3326 MB   Healthy
Volume 1    C                    NTFS    Partition     953 GB   Healthy
Volume 2    C  Recovery    NTFS    Partition     300 MB   Healthy   Hidden
Volume 3    C                    FAT32   Partition     100 MB   Healthy   Hidden
Volume 4    D  Removable   NTFS    Removable     14 GB    Healthy
Volume 5    F                    NTFS    Removable     0 B      No Media

DISKPART> exit
Leaving DiskPart...

X:\Sources>d:
  
```

10. Type “cd WdHybrid_v1 6” in Windows command line, then press “Enter”



```

Administrator: X:\windows\system32\cmd.exe

X:\Sources>diskpart
Microsoft DiskPart version 6.2.9200
Copyright (C) 1999-2012 Microsoft Corporation.
On computer: MINWINPC

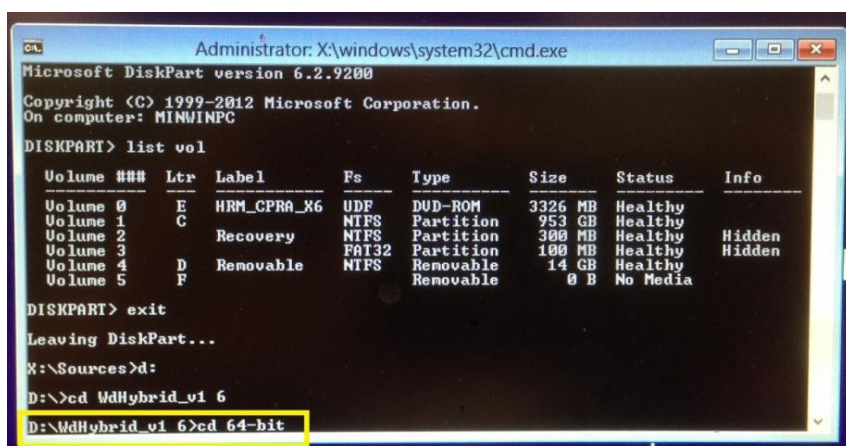
DISKPART> list vol

Volume ### Ltr Label          Fs      Type          Size      Status       Info
-----
Volume 0    E  HRM_CPRA_X6  UDF     DVD-ROM       3326 MB   Healthy
Volume 1    C                    NTFS    Partition     953 GB   Healthy
Volume 2    C  Recovery    NTFS    Partition     300 MB   Healthy   Hidden
Volume 3    C                    FAT32   Partition     100 MB   Healthy   Hidden
Volume 4    D  Removable   NTFS    Removable     14 GB    Healthy
Volume 5    F                    NTFS    Removable     0 B      No Media

DISKPART> exit
Leaving DiskPart...

X:\Sources>d:
D:\>cd WdHybrid_v1 6
  
```

11. Type “cd 64-bit” in Windows command line, and then “Enter”



```

Administrator: X:\windows\system32\cmd.exe

Microsoft DiskPart version 6.2.9200
Copyright (C) 1999-2012 Microsoft Corporation.
On computer: MINWINPC

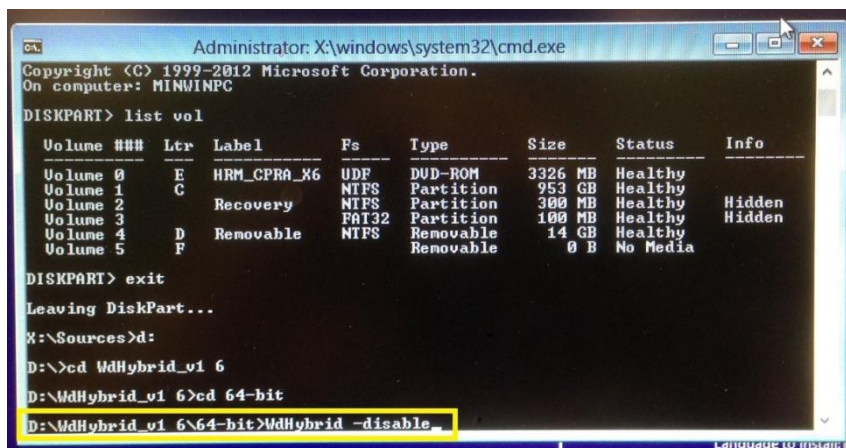
DISKPART> list vol

Volume ### Ltr Label          Fs      Type          Size      Status       Info
-----
Volume 0    E  HRM_CPRA_X6  UDF     DVD-ROM       3326 MB   Healthy
Volume 1    C                    NTFS    Partition     953 GB   Healthy
Volume 2    C  Recovery    NTFS    Partition     300 MB   Healthy   Hidden
Volume 3    C                    FAT32   Partition     100 MB   Healthy   Hidden
Volume 4    D  Removable   NTFS    Removable     14 GB    Healthy
Volume 5    F                    NTFS    Removable     0 B      No Media

DISKPART> exit
Leaving DiskPart...

X:\Sources>d:
D:\>cd WdHybrid_v1 6
D:\WdHybrid_v1 6>cd 64-bit
  
```

12. Type “WdHybrid -disable” in Windows command line, and then press “Enter”



```
Administrator: X:\windows\system32\cmd.exe
Copyright (C) 1999-2012 Microsoft Corporation.
On computer: MINWINPC

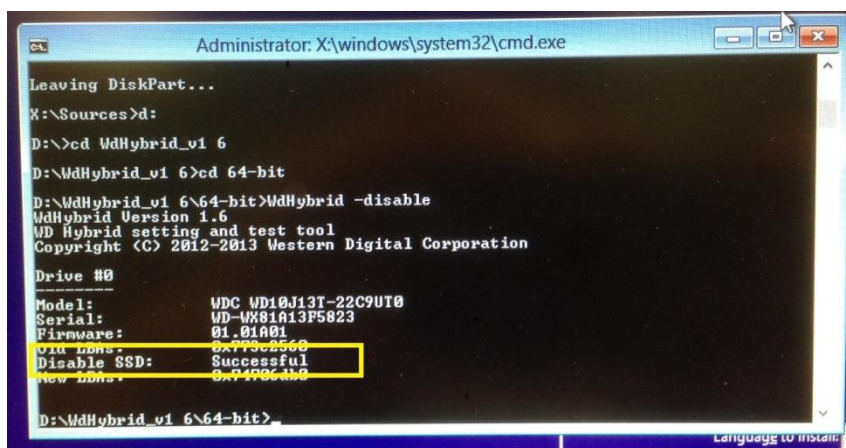
DISKPART> list vol

Volume ### Ltr Label Fs Type Size Status Info
-----
Volume 0 E HRM_CPRA_X6 UDF DVD-ROM 3326 MB Healthy
Volume 1 C NTFS Partition 953 GB Healthy
Volume 2 Recovery NTFS Partition 300 MB Healthy Hidden
Volume 3 FAT32 Partition 100 MB Healthy Hidden
Volume 4 D Removable NTFS Removable 14 GB Healthy
Volume 5 F Removable NTFS Removable 0 B No Media

DISKPART> exit
Leaving DiskPart...

X:\Sources>d:
D:\>cd WdHybrid_v1 6
D:\WdHybrid_v1 6>cd 64-bit
D:\WdHybrid_v1 6\64-bit>WdHybrid -disable
```

13. The system will show “Disable SSD: Successful”



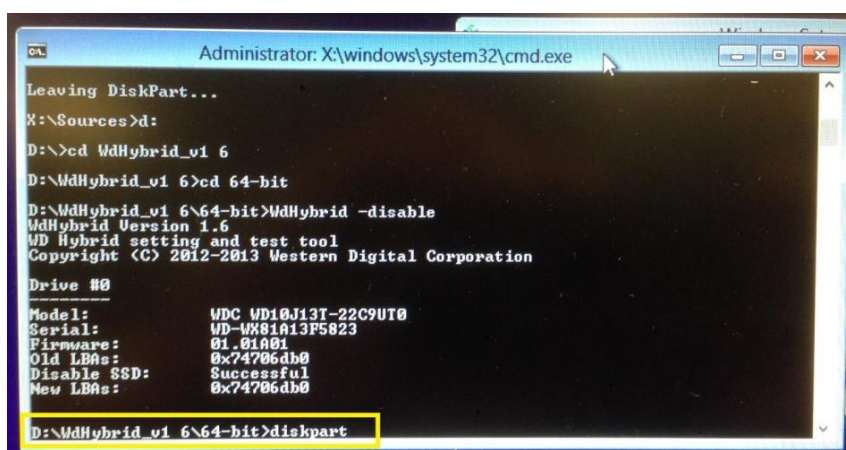
```
Administrator: X:\windows\system32\cmd.exe
Leaving DiskPart...

X:\Sources>d:
D:\>cd WdHybrid_v1 6
D:\WdHybrid_v1 6>cd 64-bit
D:\WdHybrid_v1 6\64-bit>WdHybrid -disable
WdHybrid Version 1.6
WD Hybrid setting and test tool
Copyright (C) 2012-2013 Western Digital Corporation

Drive #0
Model: WDC WD10J13T-22C9UT0
Serial: WD-WX81A13F5023
Firmware: 01.01A01
Old LBAs: 0x773c2560
Disable SSD: Successful
New LBAs: 0x747064b0

D:\WdHybrid_v1 6\64-bit>
```

14. Type “diskpart” in Windows command line, and then press “Enter”



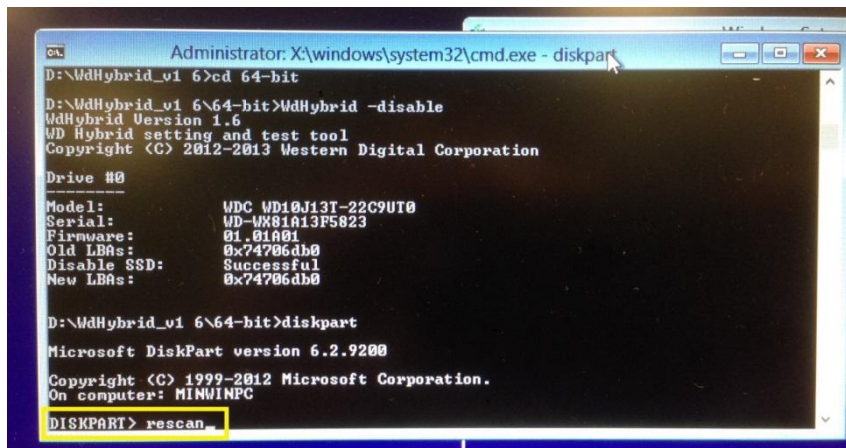
```
Administrator: X:\windows\system32\cmd.exe
Leaving DiskPart...

X:\Sources>d:
D:\>cd WdHybrid_v1 6
D:\WdHybrid_v1 6>cd 64-bit
D:\WdHybrid_v1 6\64-bit>WdHybrid -disable
WdHybrid Version 1.6
WD Hybrid setting and test tool
Copyright (C) 2012-2013 Western Digital Corporation

Drive #0
Model: WDC WD10J13T-22C9UT0
Serial: WD-WX81A13F5023
Firmware: 01.01A01
Old LBAs: 0x747064b0
Disable SSD: Successful
New LBAs: 0x747064b0

D:\WdHybrid_v1 6\64-bit>diskpart
```


15. Type “rescan” in Windows command line, and then press “Enter”

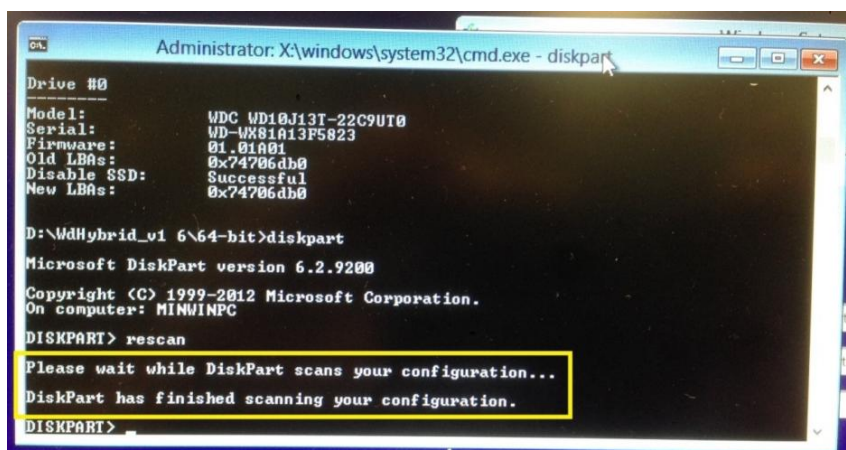


```
Administrator: X:\windows\system32\cmd.exe - diskpart
D:\WdHybrid_v1 6>cd 64-bit
D:\WdHybrid_v1 6\64-bit>WdHybrid -disable
WdHybrid Version 1.6
WD Hybrid setting and test tool
Copyright (C) 2012-2013 Western Digital Corporation

Drive #0
-----
Model:          WDC WD10J13T-22C9UT0
Serial:         WD-WX81A13F5823
Firmware:       01.01A01
Old LBAs:       0x74706db0
Disable SSD:    Successful
New LBAs:       0x74706db0

D:\WdHybrid_v1 6\64-bit>diskpart
Microsoft DiskPart version 6.2.9200
Copyright (C) 1999-2012 Microsoft Corporation.
On computer: MINWINPC
DISKPART> rescan
```

16. The system will show the message framed by yellow color, that means **disable SSD process is done**



```
Administrator: X:\windows\system32\cmd.exe - diskpart
Drive #0
-----
Model:          WDC WD10J13T-22C9UT0
Serial:         WD-WX81A13F5823
Firmware:       01.01A01
Old LBAs:       0x74706db0
Disable SSD:    Successful
New LBAs:       0x74706db0

D:\WdHybrid_v1 6\64-bit>diskpart
Microsoft DiskPart version 6.2.9200
Copyright (C) 1999-2012 Microsoft Corporation.
On computer: MINWINPC
DISKPART> rescan
Please wait while DiskPart scans your configuration...
DiskPart has finished scanning your configuration.
DISKPART>
```

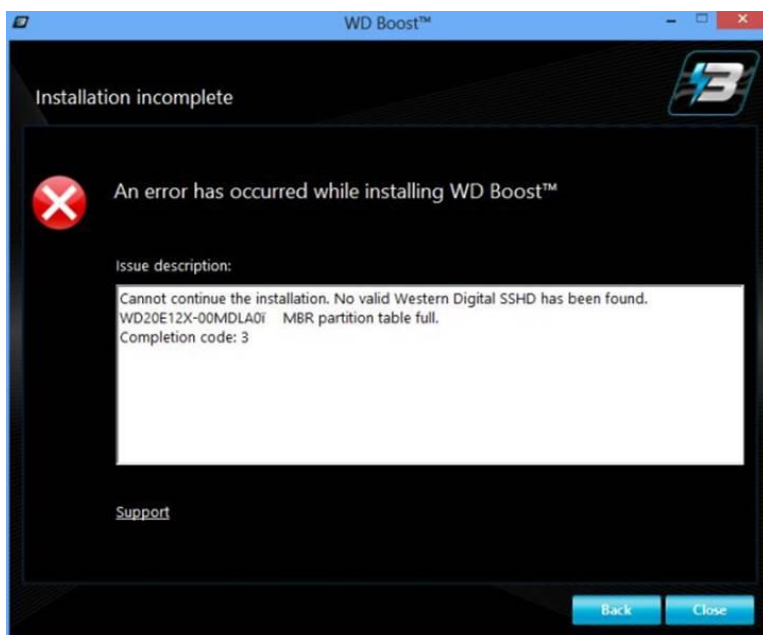
Part 3, Install Windows OS

17. Boot up the Windows OS Installation Disc and follow the instructions on screen to complete installation.


Part 4, Install WD HyBrid HDD Driver

After completing Windows OS installation, please install “WDBoost_1.50.433.72.exe” to achieve better performance of WD solid state hybrid drive.

(Warning : System will show an error message as below if partition table is full (over 4 partions). A partition will need to be deleted in the drive so that the WD Boost Installer can create the caching partition.)



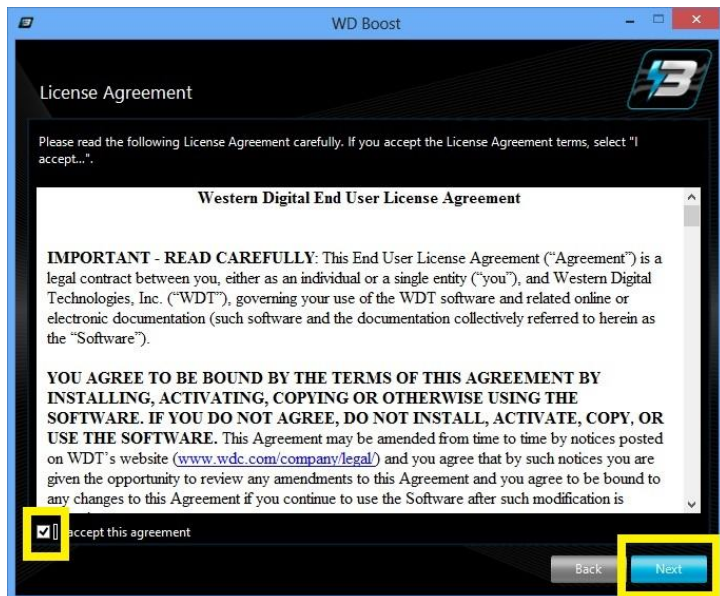
18. In windows, right click “WDBoost_1.50.433.72.exe” to run this tool as “Administrator”)

 WDBoost_1.50.433.72.exe

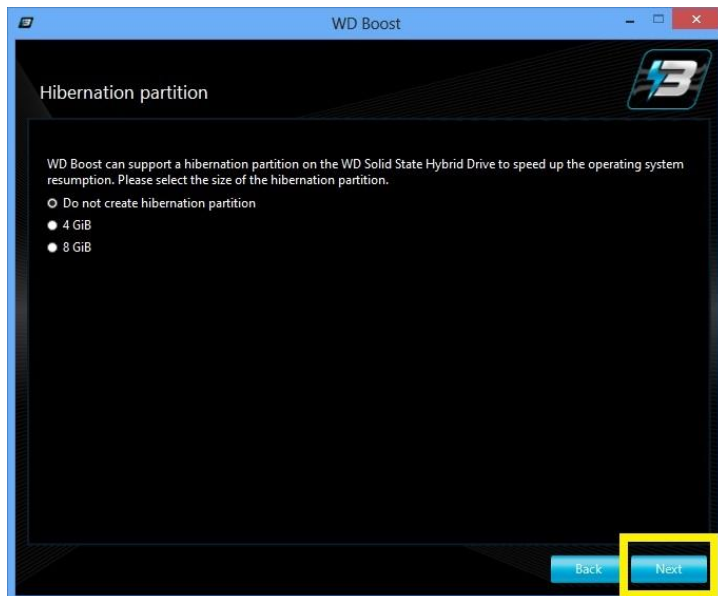
19. Please click “Install” while the WD Boost window pops up



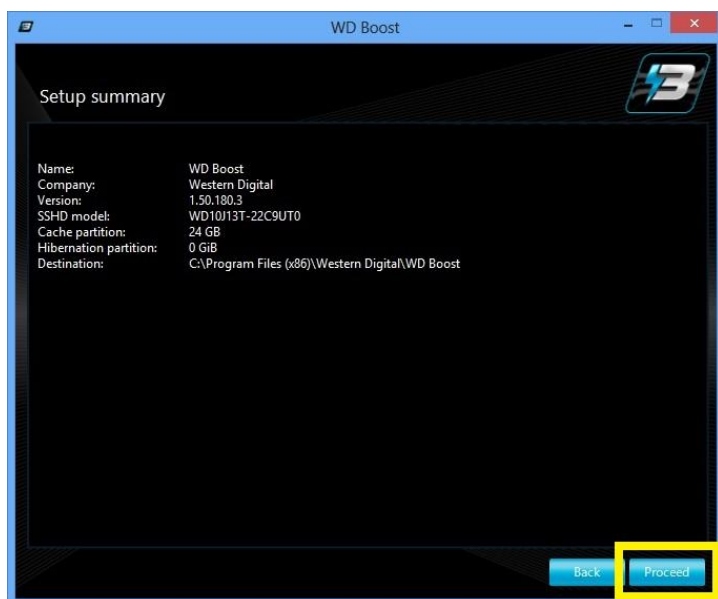
20. Select “I accept this agreement” and click “Next” to continue



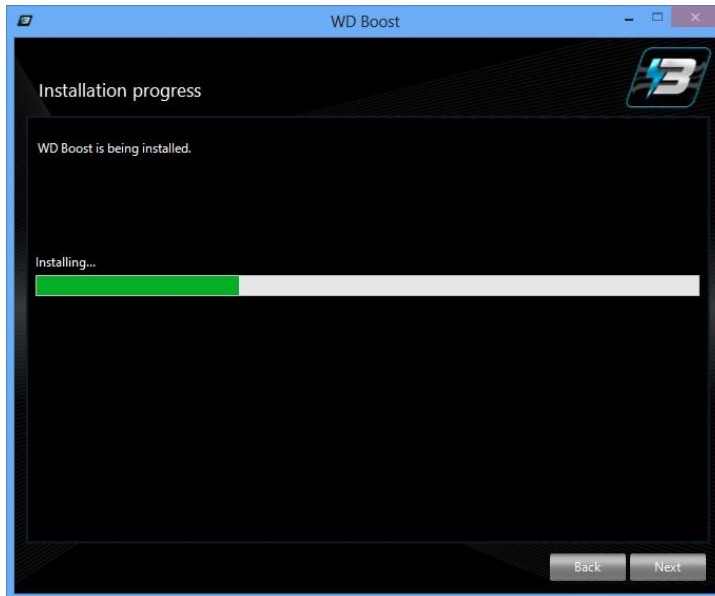
21. Please choose “Do not create hibernate partition”, click “Next”



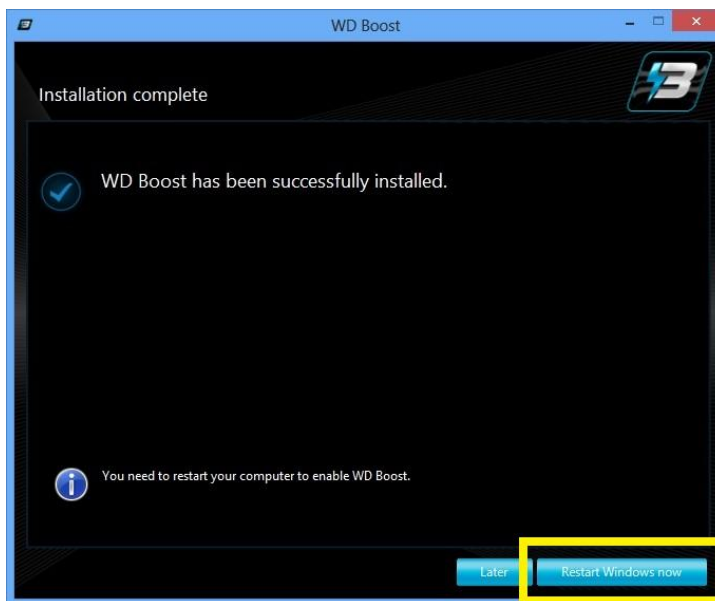
22. Click “Proceed”



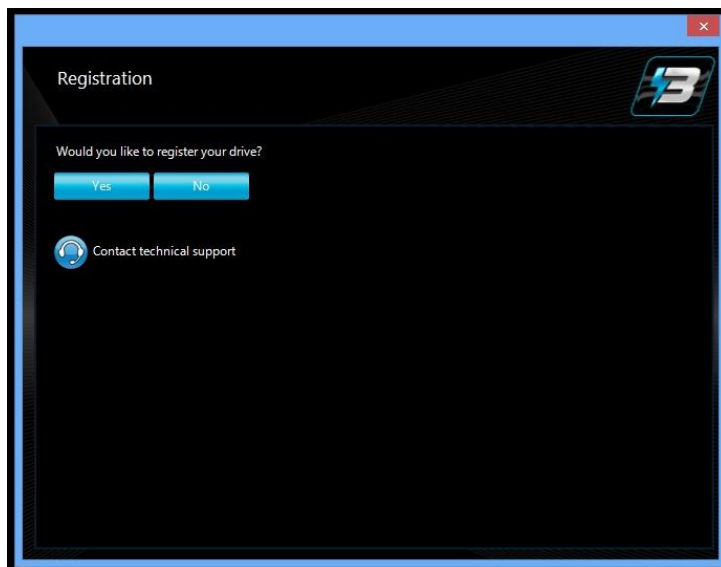
23. The Setup Wizard is installing.



24. Click “Restart Windows Now” to reboot laptop again

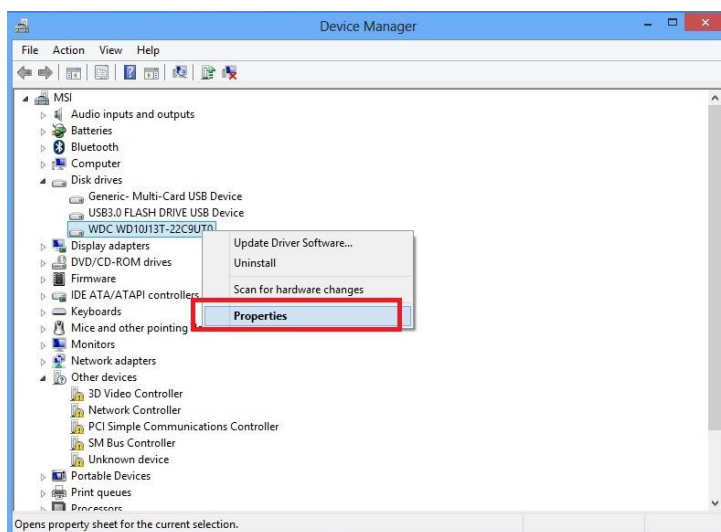


25. Click “Yes” to continue.

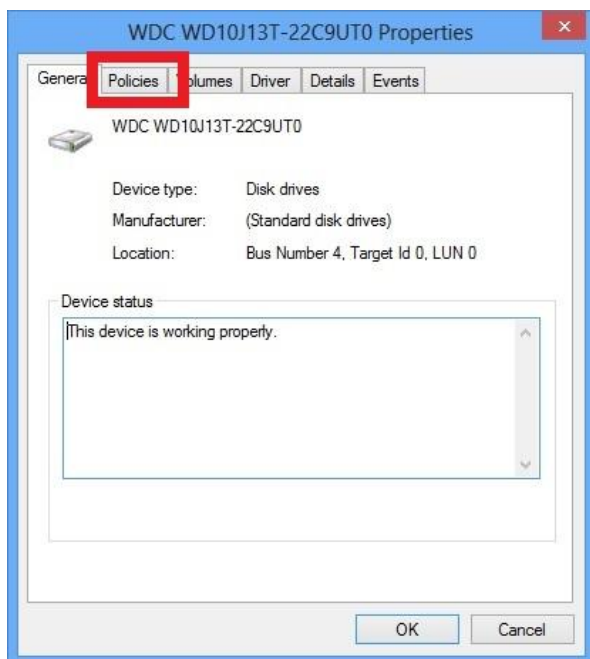


26. After showing Desktop, please reboot laptop again.

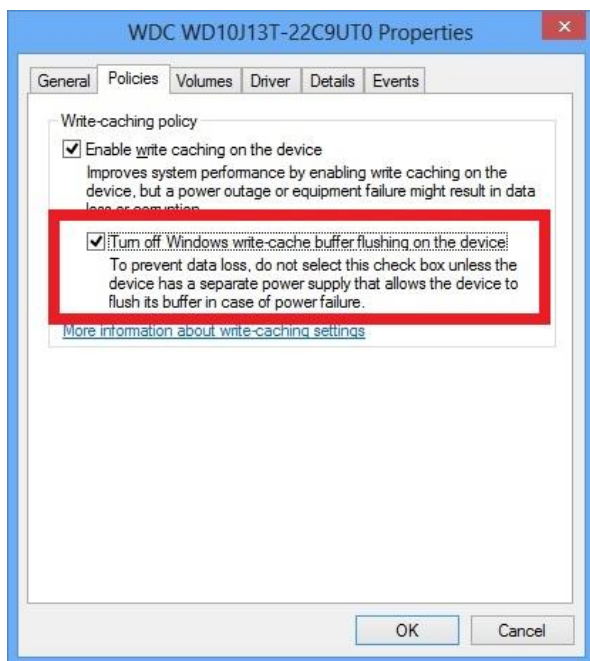
27. Access “Device Manager” and expand “Disk drives”
Right-click “WDC WD10J13T-22C9UT0” and select “Properties”



28. Click “Policies” tab



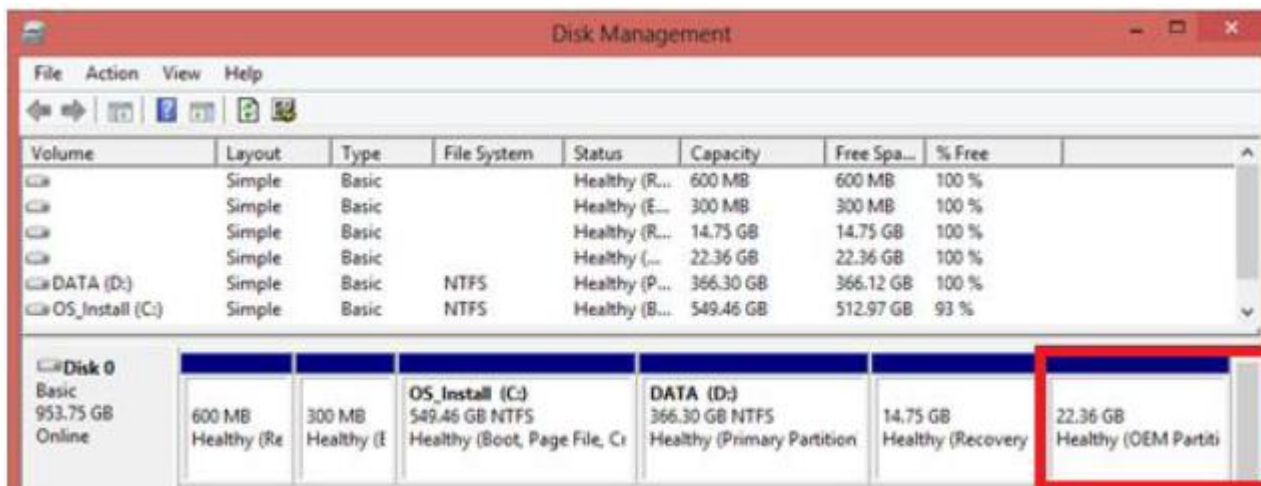
29. Make sure the option “Turn off Windows write-cache buffer flushing on the device” is enabled which improves the disk performance



3. PROCEDURES OF REINSTALL Windows7/Windows8 System

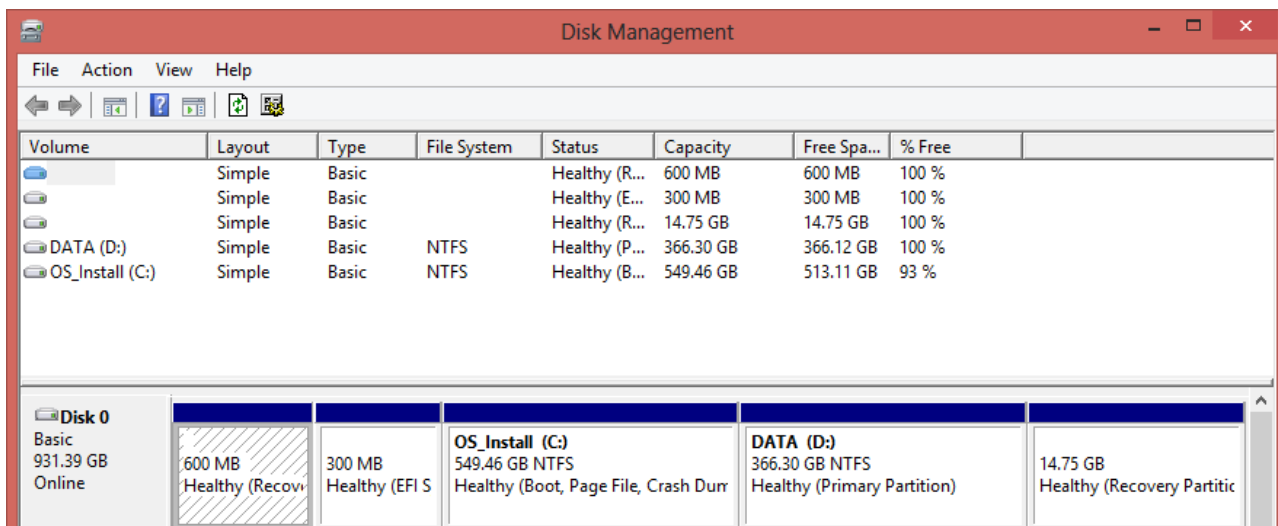
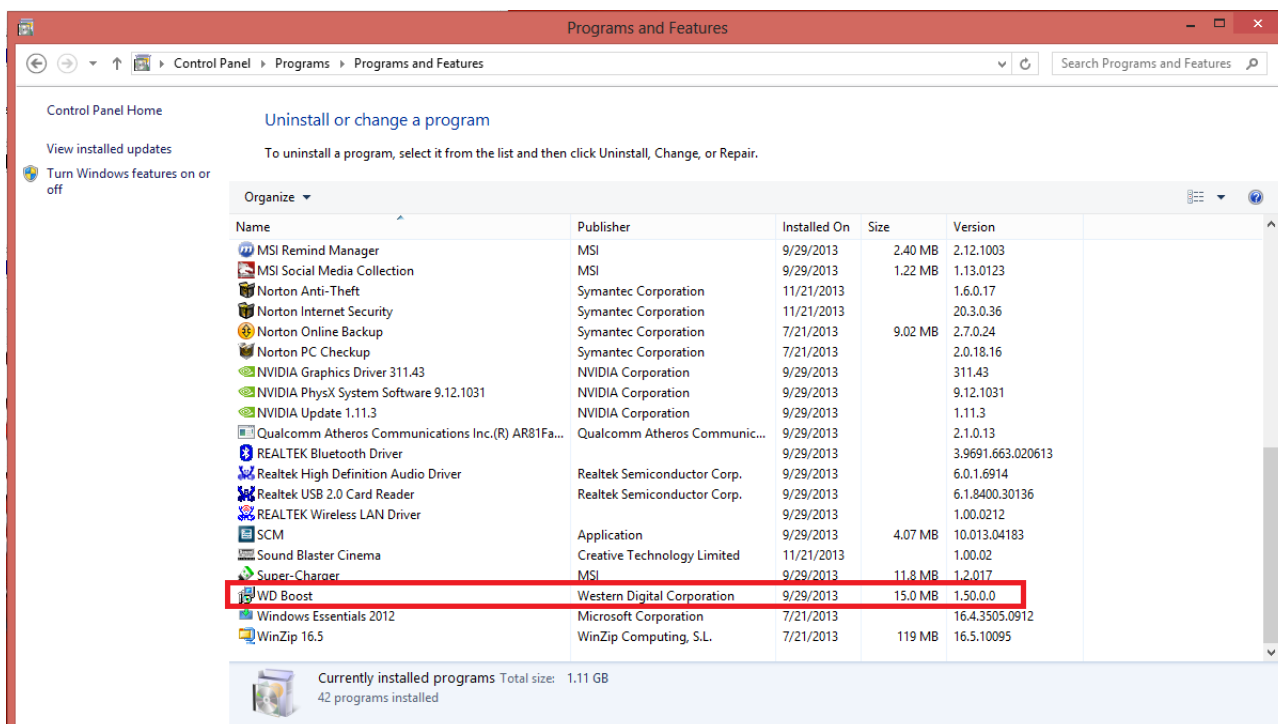
Part 1, Requirement

1. If we want to reinstall Windows 7/Windows 8 system on the OS which we made on Free-DOS (See also, Chapter 2 : PROCEDURES OF CLEAN INSTALL ON FreeDOS), there is the method to disable SSD partition from disk.



Part 2, Disable SSD in OS mode

- Uninstall WD Boost from Programs and Features, then reboot the system. the SSD partition will be disappeared (be disable).

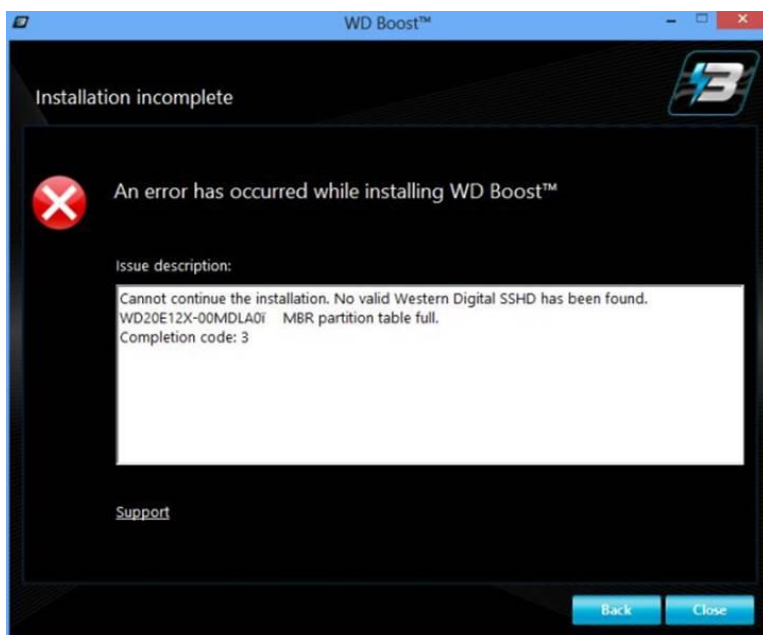


- You can install Win7/Win8 system whatever you want.


Part 3, Install WD HyBrid HDD Driver

After completing Windows OS installation, please install “WDBoost_1.50.433.72.exe” to achieve better performance of WD solid state hybrid drive.

(Warning : System will show an error message as below if partition table is full (over 4 partions). A partition will need to be deleted in the drive so that the WD Boost Installer can create the caching partition.)



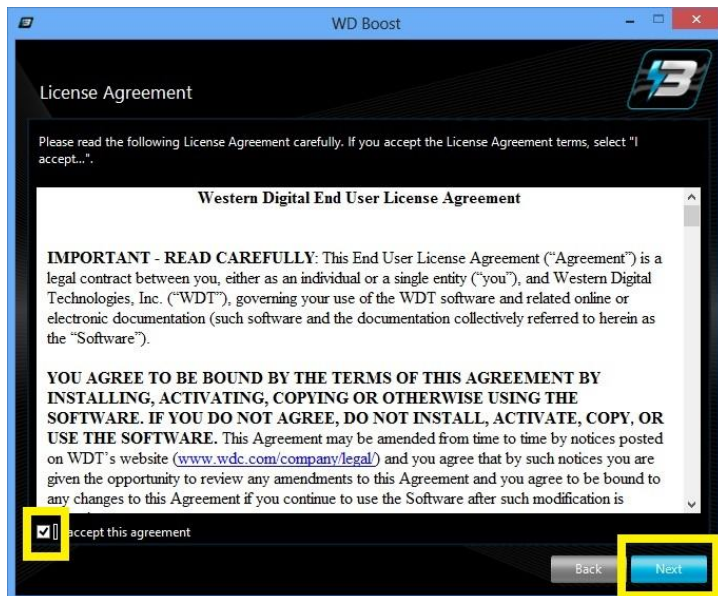
1. In windows, right click “WDBoost_1.50.433.72.exe” to run this tool as “Administrator”)

 WDBoost_1.50.433.72.exe

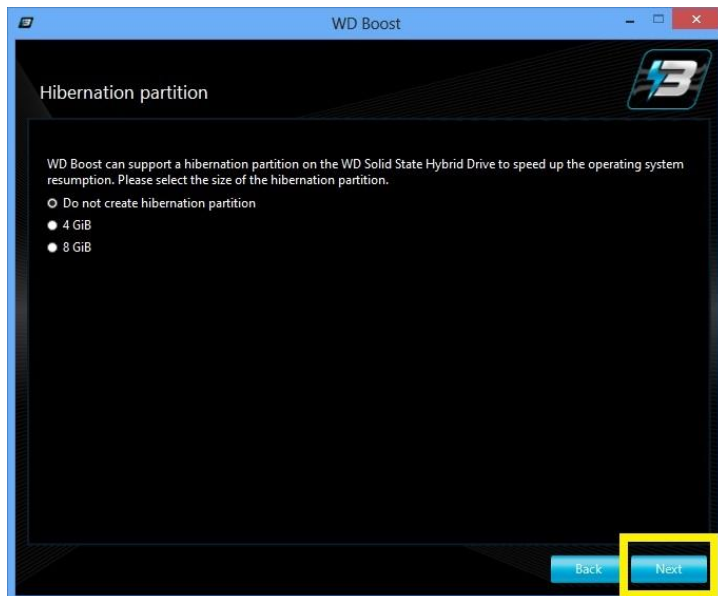
2. Please click “Install” while the WD Boost window pops up



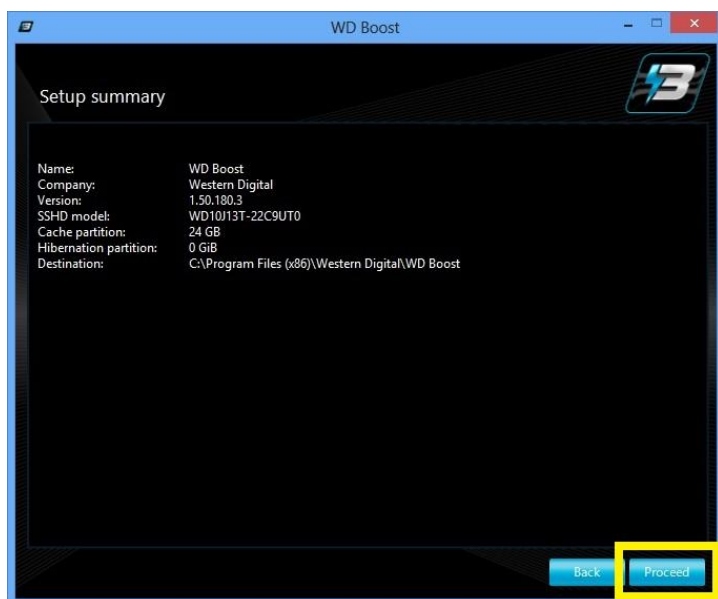
3. Select “I accept this agreement” and click “Next” to continue



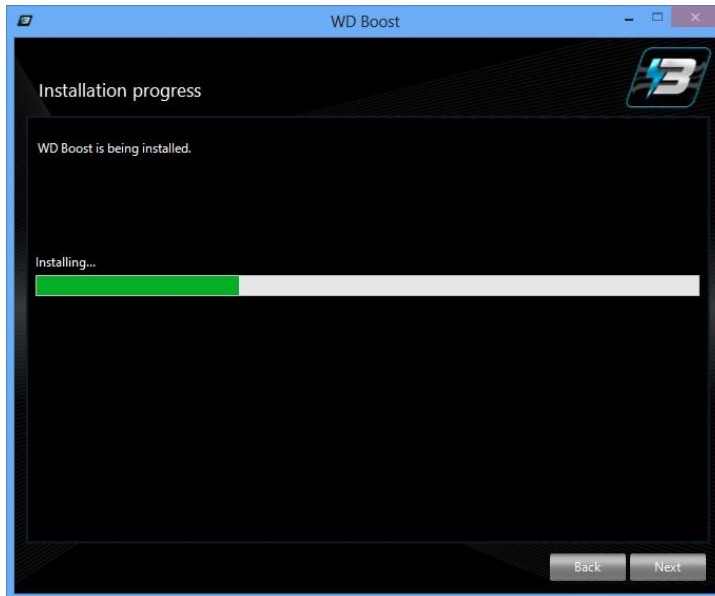
4. Please choose “Do not create hibernate partition”, click “Next”



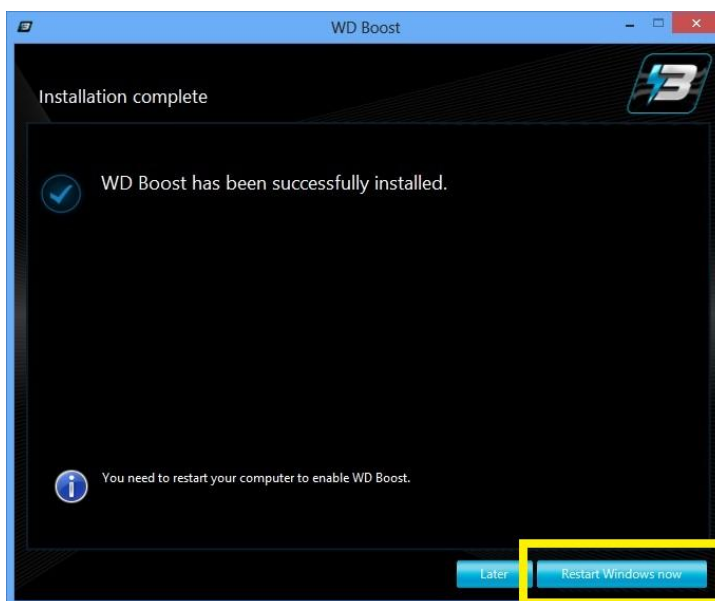
5. Click “Proceed”



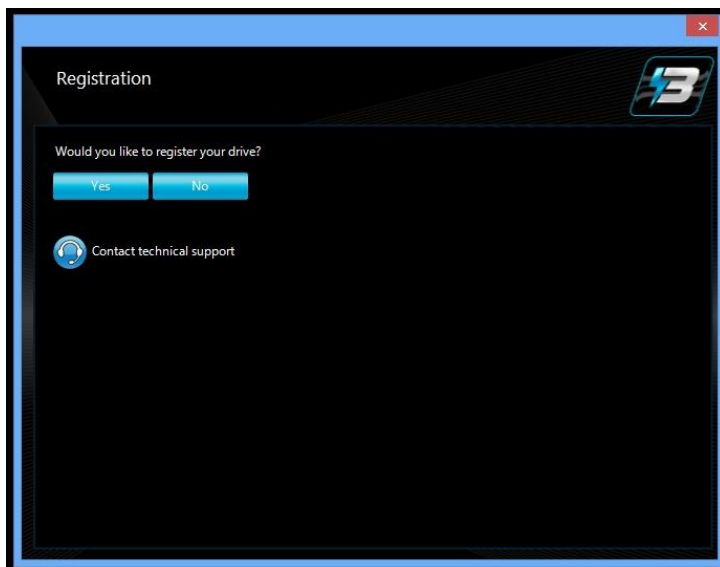
6. The Setup Wizard is installing.



7. Click "Restart Windows Now" to reboot laptop again

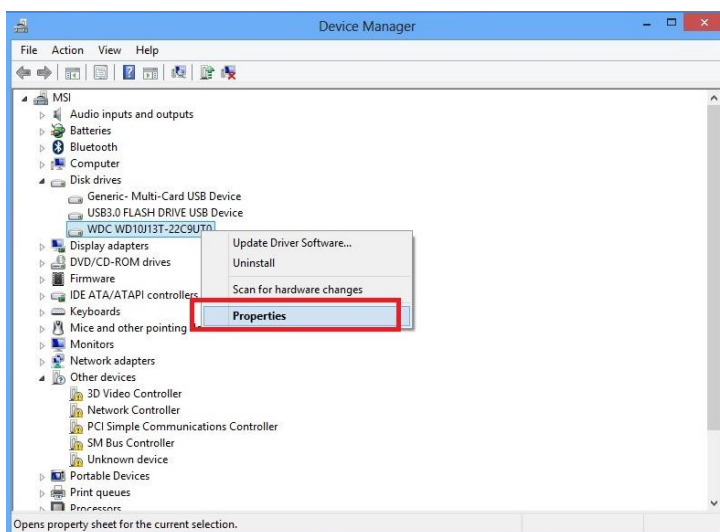


8. Click “Yes” to continue.

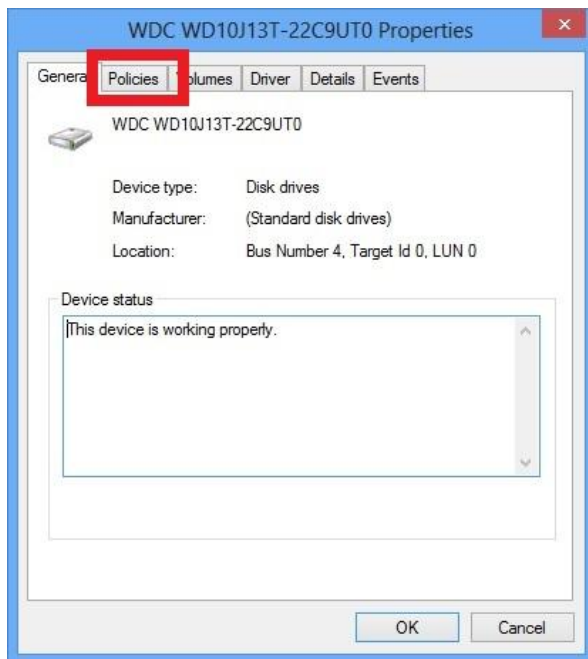


9. After showing Desktop, please reboot laptop again.

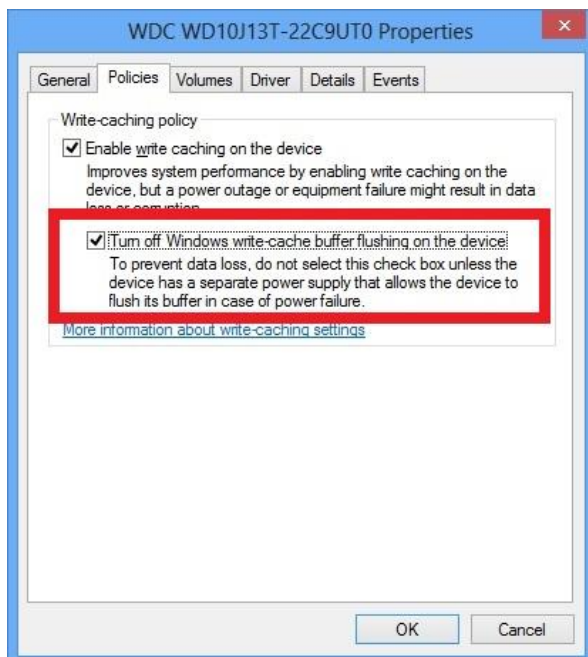
10. Access “Device Manager” and expand “Disk drives”
Right-click “WDC WD10J13T-22C9UT0” and select “Properties”



11. Click “Policies” tab



12. Make sure the option “Turn off Windows write-cache buffer flushing on the device” is enabled which improves the disk performance



13. After the installation, please also make sure the SSD partition is created again.

